

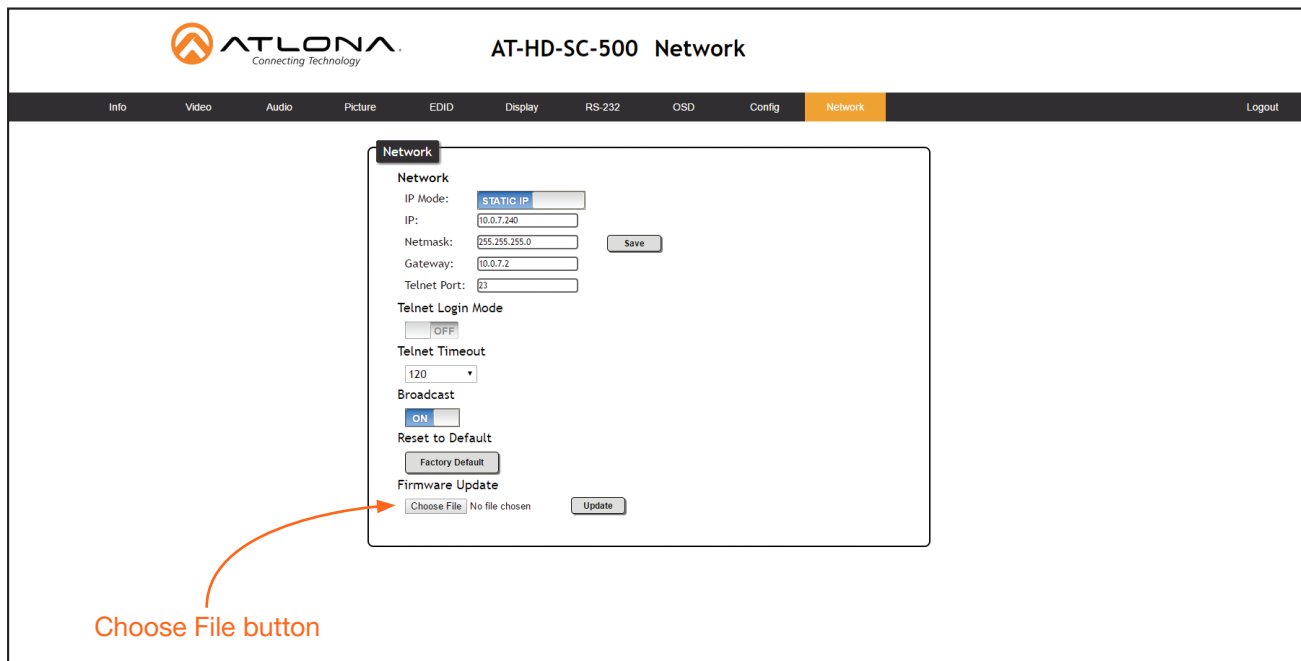
Update Instructions

Updating the firmware can be completed using either the USB interface or the web GUI. Atlona recommends using the web GUI for updating the firmware. However, If a network connection is not available, the AT-HD-SC-500 firmware can be updated using a USB-A to USB mini-B cable.

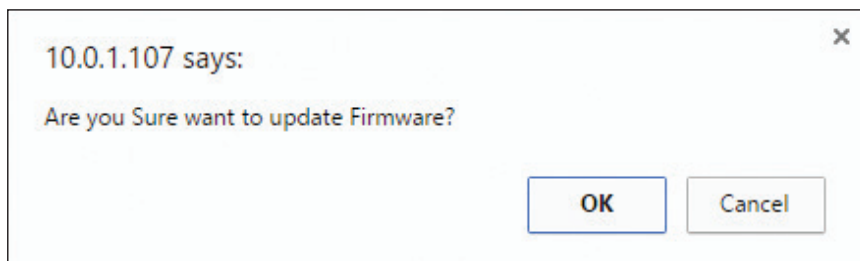
Using the Web GUI

Requirements

- AT-HD-SC-500
 - Firmware file
 - Computer
1. Connect an Ethernet cable from the computer, containing the firmware, to the same network where the AT-HD-SC-500 is connected.
 2. Go to the **Network** page in the web GUI.

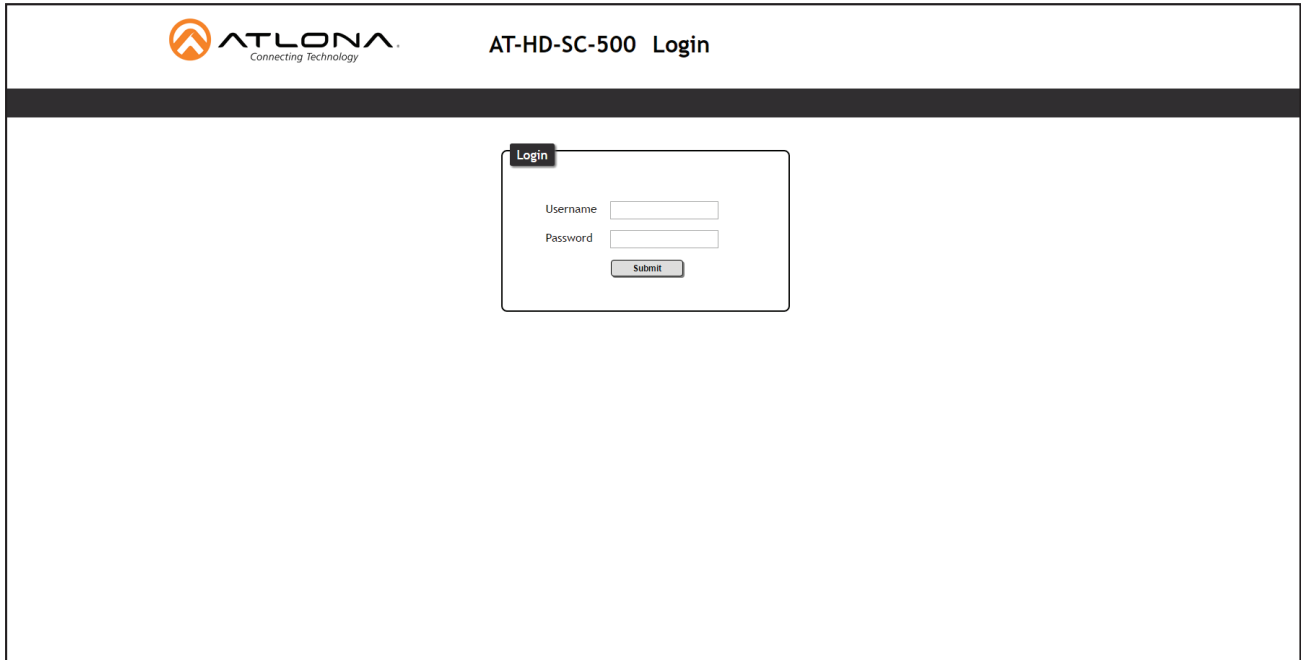


3. Click the **Choose File** button, under the **Firmware Update** section.
4. Browse to the location of the firmware file, select it, and click the **Open** button.
5. Click the **Update** button.
6. The following dialog will be displayed.



Update Instructions

7. Click the **OK** button to begin the firmware update process. Click the **Cancel** button to cancel the process.
8. The update process will take approximately 60 seconds and will automatically reboot the AT-HD-SC-500.
9. After the firmware update process is complete, the **Login** screen will be displayed.

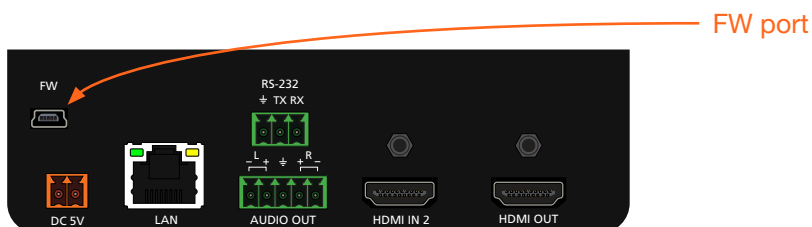


Using USB

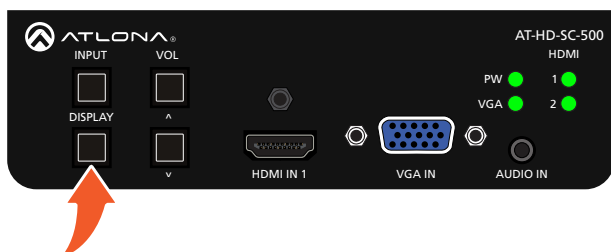
Requirements

- AT-HD-SC-500
- Firmware file: HDSC-500-FW-[version].BIN
- Computer running Windows
- USB-A to USB mini-B cable

1. Disconnect power from the AT-HD-SC-500.
2. Connect the USB-A to USB mini-B cable from the computer to the **FW** port on the AT-HD-SC-500.



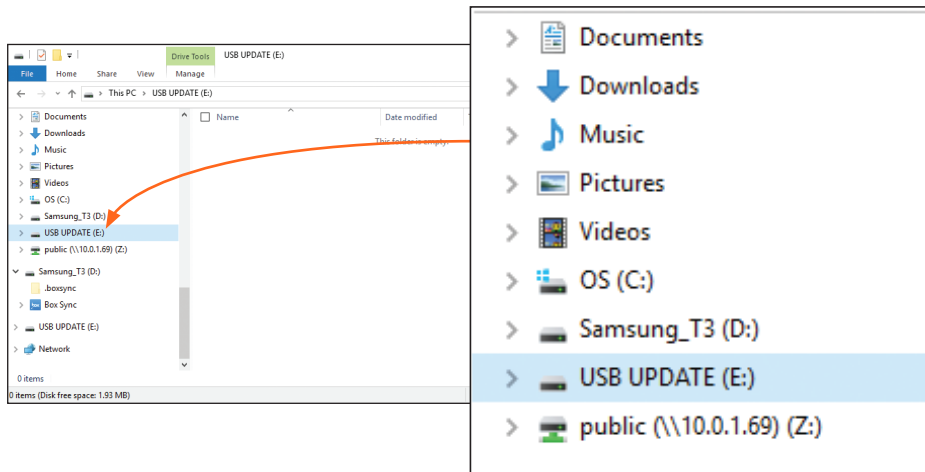
3. Press and hold the **DISPLAY** key, on the front panel, while connecting power to the AT-HD-SC-500.



Update Instructions

- The USB UPDATE folder will be displayed.

If this folder is not displayed, automatically, select the USB UPDATE drive from Windows Explorer.



- Delete all files from the USB UPDATE drive, if any are present.
- Drag-and-drop the HDSC-500-FW-[version].BIN firmware file to the drive.
- After the file has been copied, disconnect the USB cable from both the computer and the AT-HD-SC-500.
- Power-cycle the AT-HD-SC-500 by disconnecting then reconnecting the power supply.
- The firmware update process is complete.